



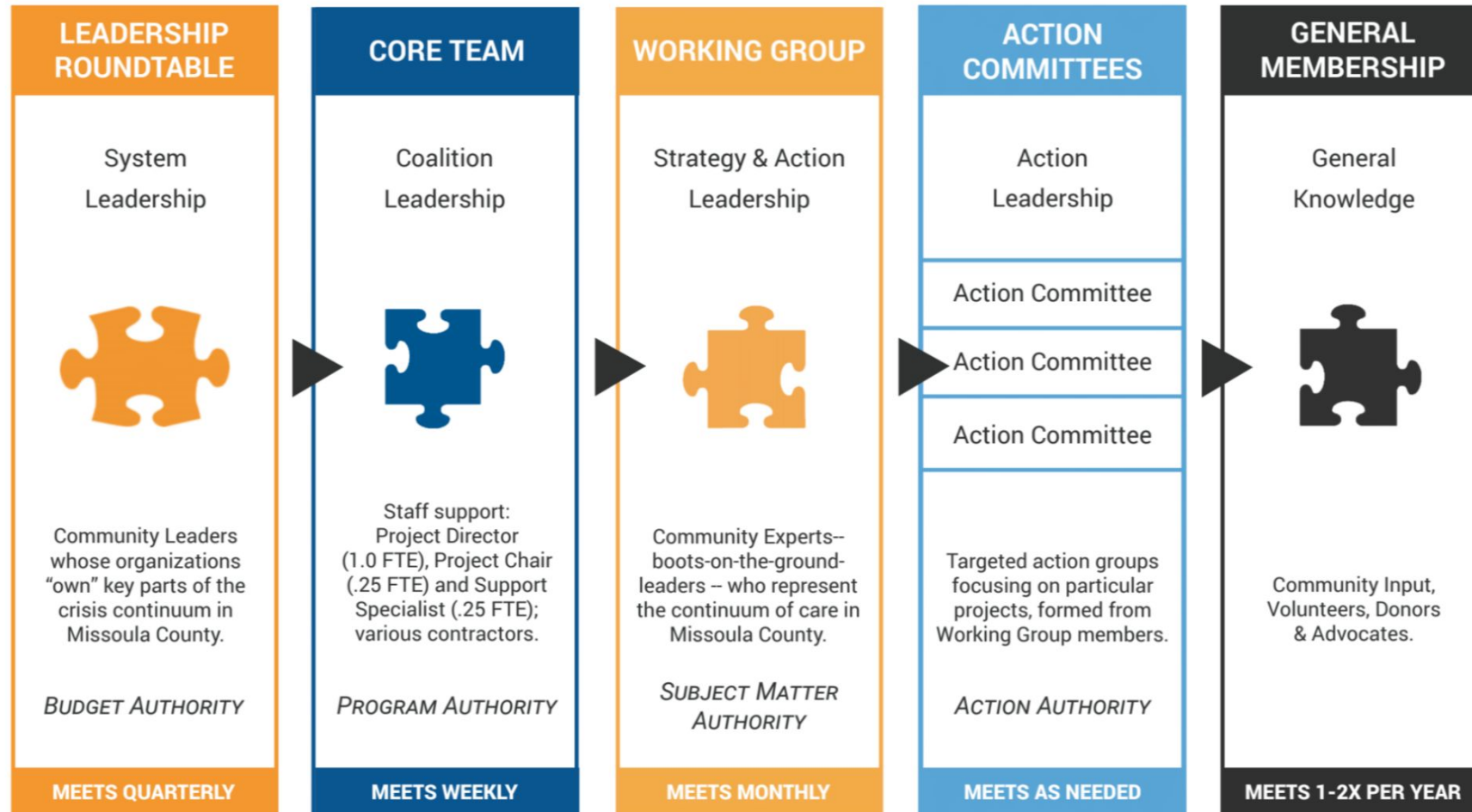
Welcome

SUDC Stakeholder Retreat - Day 1
September 22, 2021



Missoula Substance Use Disorder Connect Governance Structure

PHASE 1 STRUCTURE AS OF AUGUST 2021



Needs Assessment of the Missoula County Substance Use Care System

August 2021

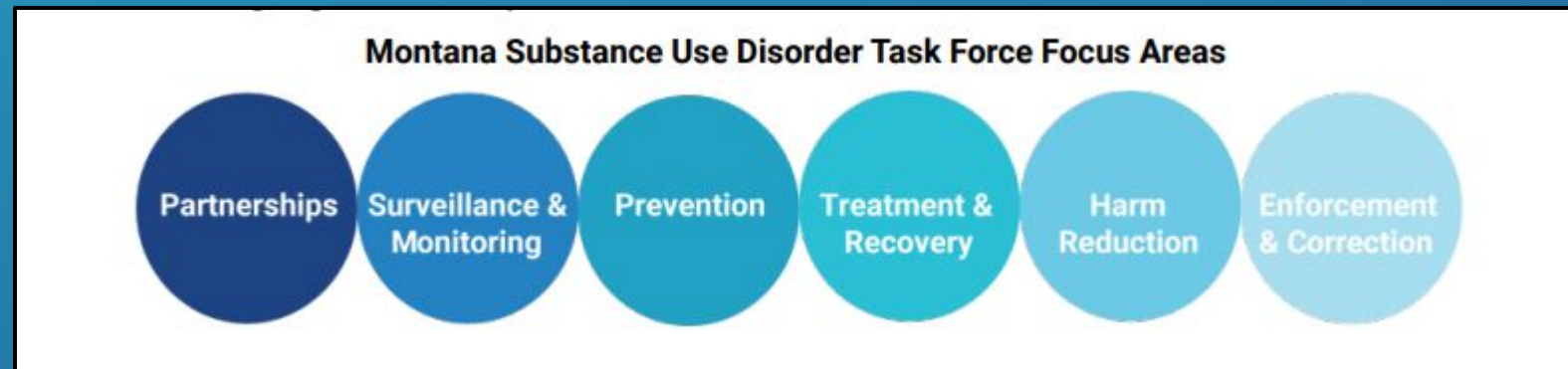
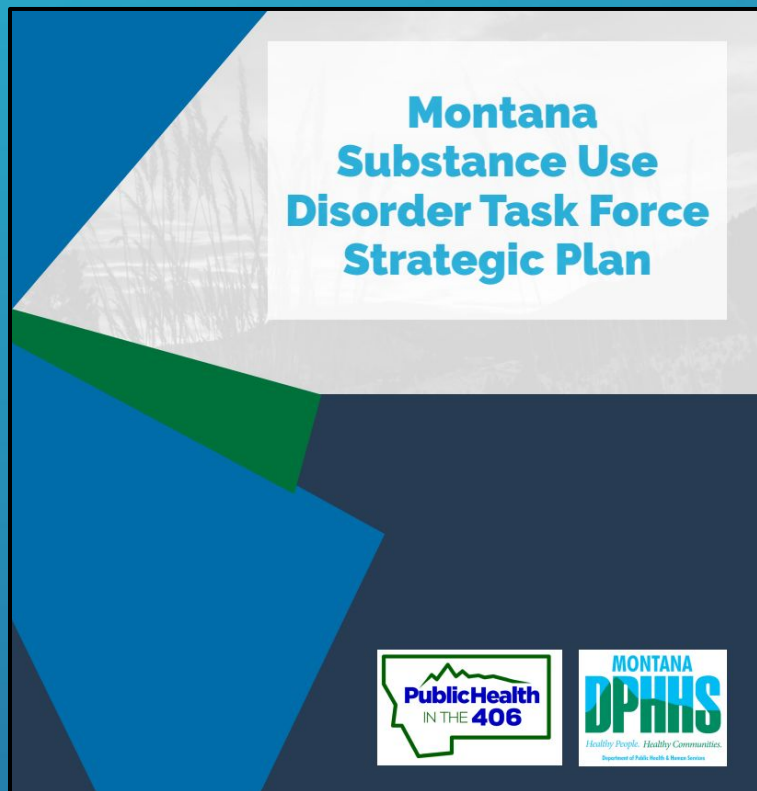


Photo credit: City of Missoula: www.ci.missoula.mt.us

Needs Assessment of the Missoula County Substance Use Care System



Needs Assessment of the Missoula County Substance Use Care System



Needs Assessment - Summary of Positives

- Partnerships: Coalitions are strong! Coalitions are active and varied within the county and offer a great starting point for addressing the gaps identified in this assessment.
- Monitoring and Surveillance: Activities are being undertaken by the county, hospitals and/or agencies.
- Prevention: Activities are robust, especially those that target youth.

Needs Assessment - Summary of Positives

- Treatment: Across inpatient and outpatient elements, it was noted that both psychiatrists and waived buprenorphine providers are shown to be able to meet possible demand.
- Harm reduction: Approaches are present in the community, especially in regards to Opioid Use Disorder, and the impact of this perspective appears to be growing.
- Law enforcement: Making concerted efforts to improve their capacity to engage those with a mental health/SUD condition and is actively engaging in programs intended to obtain the most appropriate care for individuals with SUD (not always a detention facility).

Needs Assessment - Potential for Expansion

- Partnerships: Continue to collaborate with existing coalitions and community partners to engage in SUDC in ways that do not duplicate existing efforts.
- Monitoring and Surveillance: Potential for tracking data in one place.
- Prevention: The most significant gap in prevention is for health promotion and education campaigns aimed at community members in the county. Further discussion about the ways in which social norms influence how substances are perceived and the ways in which these perceptions shape expectations of use and control are important discussions for the community to engage in, as they help to identify community-specific goals.

Needs Assessment - Potential for Expansion

- Treatment: Across inpatient and outpatient elements, **most providers are shown to be unable to meet possible demand. Missoula County has the most significant gaps in the treatment elements in the areas of:**
 - *Detoxification*
 - *Partial Day Treatment/Hospitalization*
 - *Recovery Residences*
 - *Certified Peer Support Specialists*
- Harm reduction: **It would be valuable to explore how harm reduction can be applied to support users of other illicit drug types.**
- Law enforcement: **To be reviewed at a later time.**

Needs Assessment - Challenges

- One key finding in this study is **the outsized role that alcohol has** in the demand for EMS and emergency department services, as well as the role it plays in the criminal justice system.
- Approximately **3,000 to 4,000 active users of methamphetamines or heroin** in Missoula County, and **a likely need for treatment** for illicit drug use, across all substances, for **about 2,300 residents**.
- **Missoula is a regional hub** for health services in general, and likely even more so for substance use treatment.

Needs Assessment - Challenges

- Alcohol and drug use are a likely contributor to a broad range of the criminal activities occurring within Missoula County. Enhanced engagement with a robust continuum of care for substance use has the potential to decrease criminal activity within the county
- Data suggest that engagement with the treatment system has steadily increased over the past five years for county residents.
- As most of us are already aware, housing supports are limited throughout all of Montana, and affordable housing is a significant challenge in Missoula County.

Needs Assessment of the Missoula County Substance Use Care System



Photo credit: City of Missoula: www.ci.missoula.mt.us