

MISSOULA SUBSTANCE USE DISORDER CONNECT

*Funded through a grant received by the
High Intensity Drug Trafficking Area (HIDTA) program
of the Office of National Drug Control Policy (ONDCP)*

Shannan Sproull – Project Director, United Way of Missoula County

YELLOWSTONE SUBSTANCE ABUSE CONNECT (SAC)

Fall 2017:

AID Montana initiated by Montana Attorney General - a comprehensive approach to addressing Montana's substance abuse problem, through coordinated treatment, education, and enforcement.

2018:

SAC forms as a companion to Project Safe Neighborhoods, an enforcement coalition substantially reducing the SUPPLY of illegal drugs and drug-related crime.

SAC organizes enforcement, treatment, and prevention stakeholders to substantially reduce DEMAND for illegal drugs and drug related crime. One page plan written; verbal commitments made.

YELLOWSTONE SUBSTANCE ABUSE CONNECT (SAC)

Jan-June 2019:

Conducts assessments of local data, interviews and focus groups.

July-2019 - Feb 2020:

Over 100 individuals and 50 organizations participate in four days of Sequential Intercept Mapping.

Gaps and Resources identified

Community prioritizes next actions

Executive Committee hones priorities according to IMPACT & FEASIBILITY.

Feb 2020:

SAC Action Plan published. Interest grows and membership swells. ***NOTE THE TIMELINE...2017-2020**

GROWING BEYOND YELLOWSTONE SAC

November 2019:

Then-U.S. State's Attorney Kurt Alme comes to Missoula and delivers a presentation at the Chamber of Commerce to approximately 30 community members, most of whom work in the substance use field in prevention or treatment. There is interest in pursuing a project similar to Yellowstone.

February 2020:

Kurt Alme returns to Missoula and conducts a second presentation at Community Medical Center, this time the audience is comprised of leaders from areas of prevention, treatment, enforcement as well as health professionals and business leaders. People agree they want to pursue. Susan Hay Patrick of United Way of Missoula County is asked to take the lead.

Spring 2020:

Susan writes, with support from Yellowstone SAC and others in Missoula, a HIDTA grant application.

MISSOULA SUD CONNECT

November 2020:

United Way of Missoula County officially announces grant. Shannan Sproull hired as Project Director; Janna Lundquist hired as Project Chair. Begin planning and laying foundation and identifying potential stakeholders.

December 2020:

Contract with JGRE out of Bozeman to conduct a Needs Assessment/Gap Analysis of SUD Prevention, Treatment and Recovery services in Missoula County.

Contract with SciGaia, also out of Bozeman, to create a project management dashboard which will also develop a data dashboard as we move forward.

Feb/March 2021:

Begin reaching out to, and meeting with, community stakeholders from a variety of sectors including: Healthcare Professionals, Law Enforcement, SUD Organizations, Prevention Specialists, State/Local Government, Schools, Religious and/or Fraternal Organizations, Youth-serving Organizations, Media, Businesses, Civic/Volunteer Organizations, Parents and Youth.

MISSOULA SUD CONNECT AN 'UMBRELLA'

Missoula Substance Use Disorder Connect* (MSC) is establishing itself as a community-wide, collective impact coalition addressing Substance Use Disorder through prevention, treatment and recovery in collaboration with enforcement. MSC plans to emulate these goals of lowering addiction and violent crimes rates in Missoula County.

Drug enforcement is more effective if done in collaboration with prevention and treatment programs that reduce demand. MSC's work thus far has revealed that there are numerous groups, task forces and agencies working on substance use disorder from the perspective of their individual missions. The purpose of MSC is to create an "umbrella" coalition that utilizes SAMSHA's 12-sector approach (typically used in Drug-Free Communities-funded projects) as a guideline for recruiting the leaders of existing organizations, along with new stakeholders, to create a comprehensive county-wide plan.

The overall goal of this project is to create a collaborative, community-wide coalition to address the epidemic of substance use disorder through measurable, feasible action plans and systems-level policy changes.

MISSOULA SUD CONNECT -- AN 'UMBRELLA'

Goal 1: Improve agency coordination and collaboration through the development of shared goals on the part of healthcare providers, social services, justice, and corrections.

Goal 2: Increase effective integration of evidence-based substance use prevention strategies.

Goal 3: Increase access to timely substance abuse treatment and care.

Goal 4: Strengthen the continuum of care to effectively manage substance use disorder in Missoula County.

Goal 5: Identify existing and potential funding and resources that are designated to the goals of reducing drug-related crime and addiction in Missoula County.

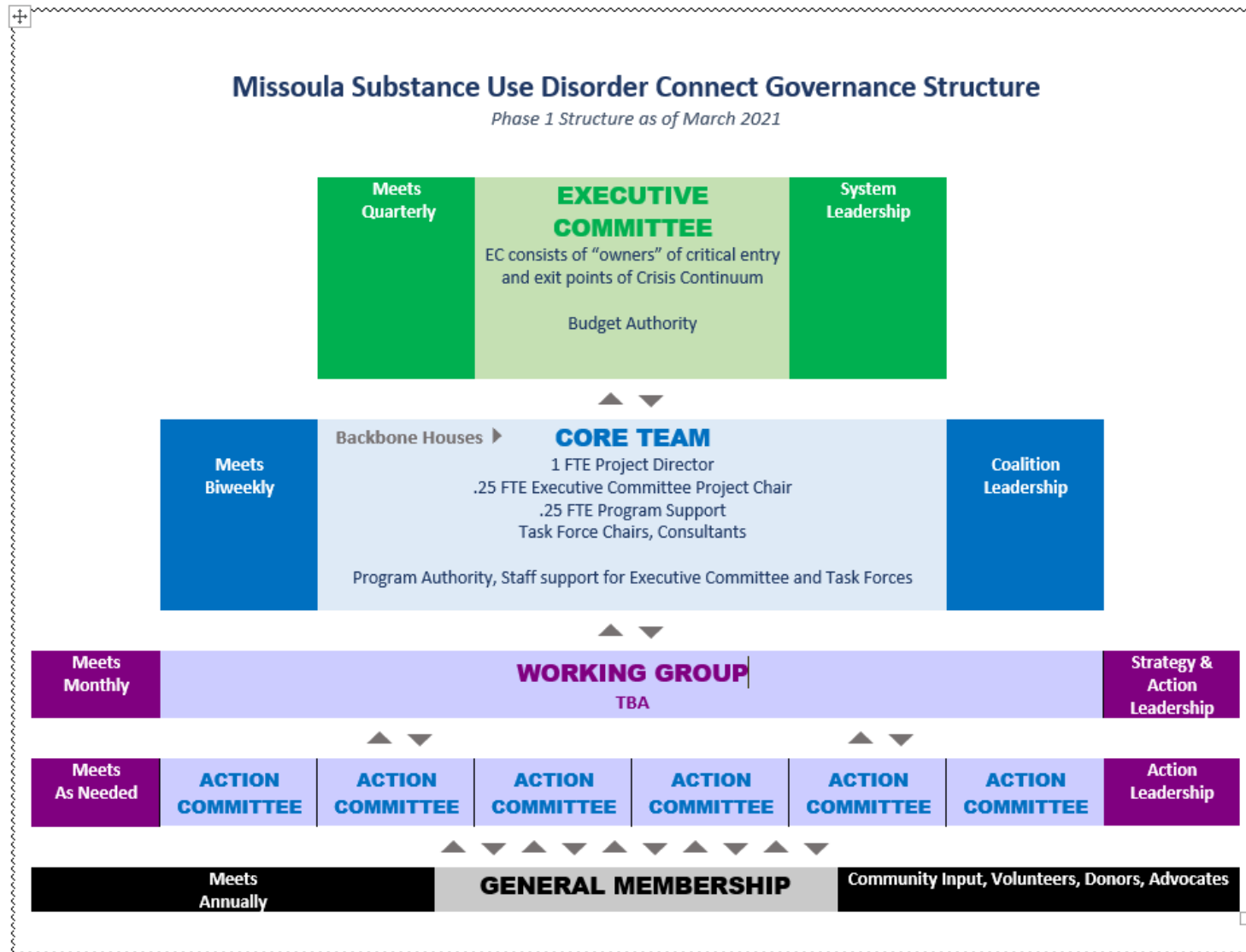
MISSOULA SUD CONNECT AN 'UMBRELLA'

Aim to be Goal-Directed, Action-Oriented, Efficient. “Many Hands Makes Light Work”

Inclusive of the spectrum:

- Prevention
 - Harm Reduction
 - Treatment
 - Diversion
 - Recovery
 - Enforcement

MISSOULA SUD CONNECT



MISSOULA SUD CONNECT



MISSOULA SUD CONNECT

MOVING FORWARD > > >

April 2021:

Continue 1:1 meetings. First meeting of Executive Committee.

Early May 2021:

First meeting of Working Group.

Summer 2021:

Stakeholder Retreat

Additional planning meetings; review Needs Assessment, determine gaps; create subgroups of Working Group; prioritize activities and/or interventions/programs to be addressed; create a sustainability plan.

Beyond...TBD!

QUESTIONS AND COMMENTS

Thoughts about this concept?

Feedback about what you would hope for?

Best way to represent the your side of the table? Most efficient and/or logical? *(one on EC, one on WG, e.g.?)*

Go-Around: If you could change or add one thing to make a difference in any of these systems to improve SUD services, reduce SUD or it's negative impacts...what would it be?

Thank you for your time!!!!